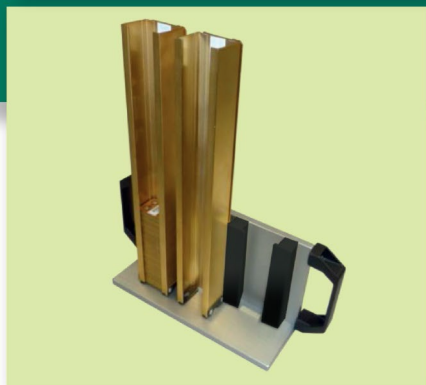
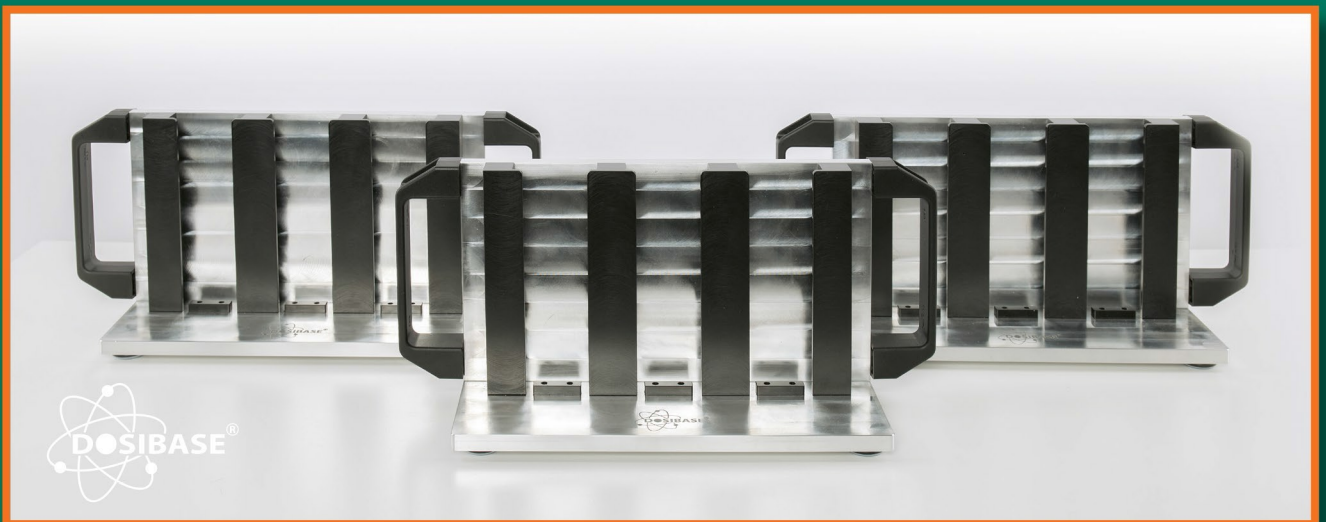


TRIPLE CARTRIDGE-HOLDER FOR TLD-CARDS

Organize the way to store and transport cartridges for HARSHAW 6600/8800 and avoid related problems with dropping fully loaded cartridges and touching a table surface

- Solid, heavy construction* holds firm, even 3 fully loaded cartridges
- The cartridge is held under the aluminum back to avoid physical contact with the cartridge feet and reduce the risk of card yams
- Maintain TLD cards in a professional and organized way and speed up the processing

*approx. weight: 2.2 kg



FOR DETAILS AND ORDER INFORMATION CONTACT:

sales@dosibase.com

SIA DosiBase, 123-40 Kr. Valdemāra Str. LV-1013