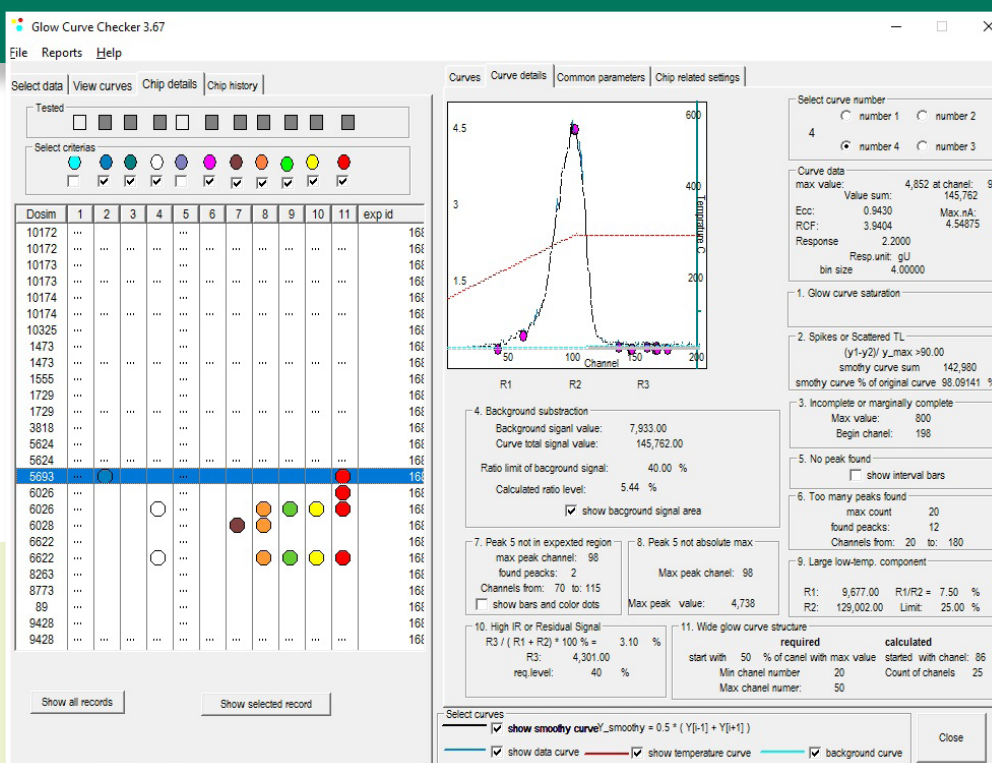


# DosiBase<sup>®</sup> Glow Curve Checker (GCC)

**DosiBase<sup>®</sup> Glow Curve Checker (GCC)**  
**is a user-friendly software for TLD glow curve screening and detection of suspicious dosimeters.**

- Imported glow curves are checked against reference values of pre-set parameters.
- The appropriate reference values shall be determined by the operator.
- GCC finds and reports those curves, which are comparable to the reference values as accepted and those curves which look irregular as rejected.
- Rejected glow curves may be manually controlled by medical physicists in order to decide on how to deal with the specific TL reading.
- TL results rejected by the algorithm can be accepted manually by the operator. Accepted results may be manually rejected.
- The criteria catalogue is based on expertise and recommendations of specialists from radiation monitoring industry.
- Based on reference card readings responsible specialist has to determine a reasonable setting for each criterion.
- The software has the capacity to maintain several sets of parameters which gives users the possibility to read different types of detectors.



# Glow Curve Checker Capabilities:

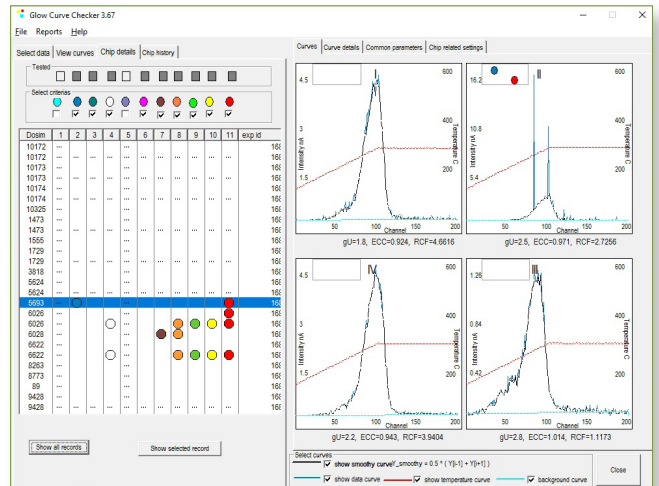
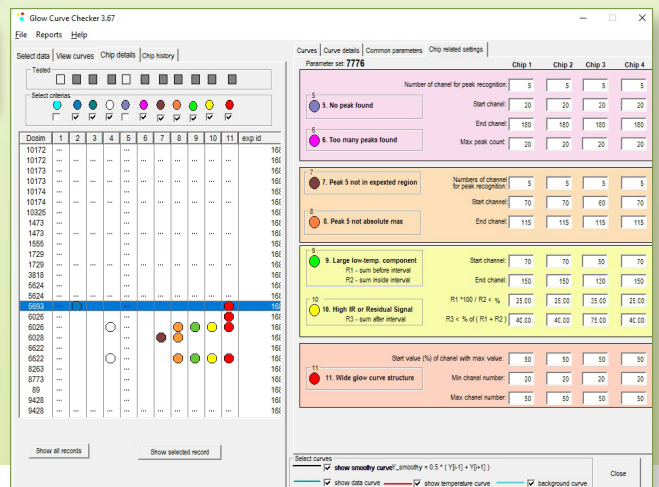
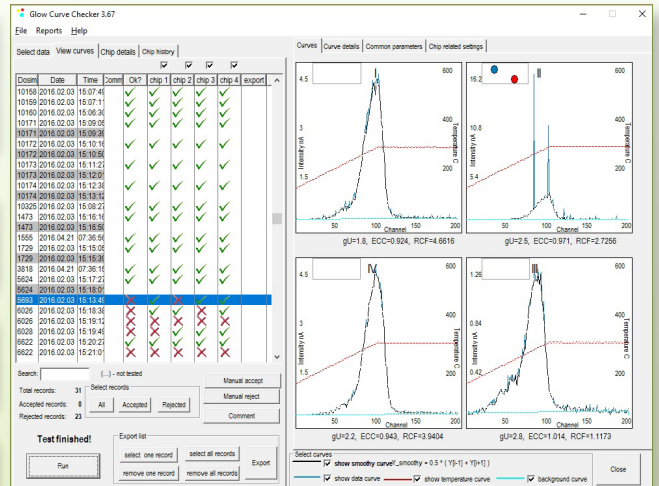
Determine and set criteria values

Accept/Reject TL results automatically or manually

Import/Export testing results

Report results of your analyses

Compatible with Windows 7, Windows 8, Windows 10



17.03.2017

This specification sheet is for informational purposes only and is subject to change without notice. Windows® is trademark of Microsoft® Corporation, PDF is trademark of Adobe®, EPD® is trademark of Thermo Fisher Scientific.



info@dosibase.com  
 www.dosibase.com  
 Address:  
 Kr. Valdemara Str. 123-40,  
 Riga, LV-1013, LATVIA  
 Tel. + 371 20214634  
 Fax + 371 67283626